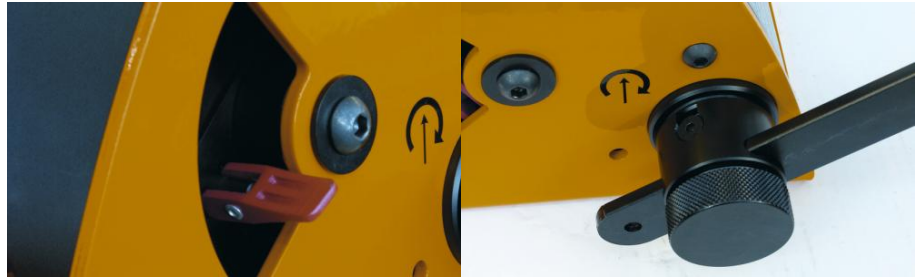


## MANIBOX GR 530 kg - model with stainless steel frame



Hand spurgear winch 530 kg, model with stainless steel frame.

Use:

- Lifting or pulling/hauling operation
- Wall-mounted or flat
- Industry
- Auditoriums, theatre scenery
- Water treatment, water dams
- Sports rooms
- Hanging chandeliers...

Comply with Machines Directive 2006/42/EC. Developed and manufactured in accordance with standard NF E N 13157.

### Technical properties

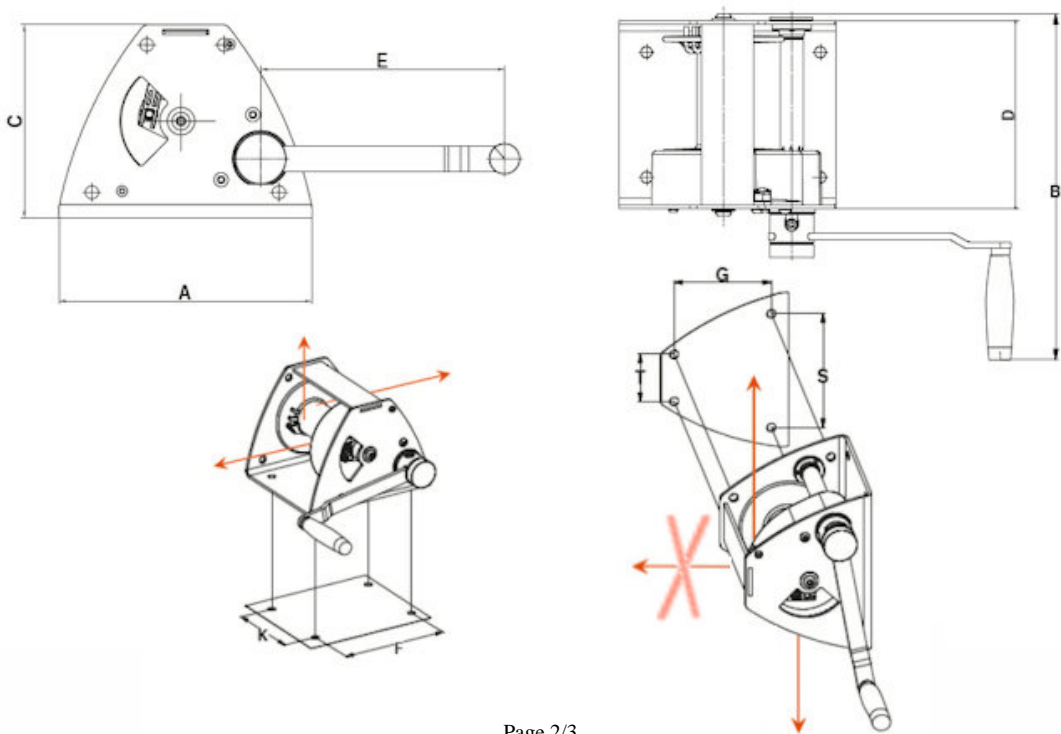
- Mechanical parts machined and protected by cataphoresis.
- Stainless steel ratchet spring.
- Straight-cut gears.
- Automatic brake made of composite materials.
- Disengageable drum, no load only, associated with a failsafe system in the rope wind direction (patented).
- Reduction system fully protected by a metal or plastic cover providing maximum safety.
- Ergonomic and removable crank handle with rotating grip, positioned on the left hand side. This crank arm can be adjusted to minimise effort according to the loads.
- Captive crank adjusting knob.
- Finition: stainless steel frame.

**Technical characteristics of MANIBOX GR 530 kg - model with stainless steel frame**

Capacity 1st layer kg	530
Capacity top layer kg	530
Nb of layers	1
Wire rope cap. 1st layer m	4
Max. rope capacity m	4
Wire rope Ø mm	6
Weight (without wire rope) kg	15
Lift per crank revolution mm	30.5
Max. hand force on crank kg	12.5

**Dimensions**

A mm	249
B mm	400
C mm	190
D mm	217
E mm	240
F mm	200
G mm	145
K mm	144
S mm	184
T mm	76



## Technical characteristics of the other models of the range

References	GR300INOX	GR530PREMINOX	GR500INOX	GR750PREMINOX	GR1000INOX
Capacity 1st layer kg	500	<b>530</b>	750	750	1450
Capacity top layer kg	300	<b>530</b>	500	750	1000
Nb of layers	6	<b>1</b>	4	1	4
Wire rope cap. 1st layer m	4	<b>4</b>	3	3	5.5
Max. rope capacity m	38	<b>4</b>	18	3	30
Wire rope Ø mm	5	<b>6</b>	7	7	9
Weight (without wire rope) kg	15	<b>15</b>	15	15	44
Lift per crank revolution mm	30.5	<b>30.5</b>	31.5	31.5	16
Max. hand force on crank kg	12.5	<b>12.5</b>	19	19	14.5

References	GR1450PREMINOX	GR2000INOX	GR2750PREMINOX
Capacity 1st layer kg	1450	2750	2750
Capacity top layer kg	1450	2000	2570
Nb of layers	1	3	1
Wire rope cap. 1st layer m	5	6	6
Max. rope capacity m	5	25	6
Wire rope Ø mm	10	13	13
Weight (without wire rope) kg	44	83	83
Lift per crank revolution mm	16	9.5	9.5
Max. hand force on crank kg	14.5	16.5	16.5



### HUCHEZ's advice

Captive crank adjusting knob, adjustable crank handle for fast winding or otherwise, maximum capacity, release does not operate under load, highly reliable rope fastener not requiring any special tools.



HUCHEZ  
4, rue Michel HAMMID  
60420 FERRIERES – France  
☎ +33 (0) 3 44 51 11 33  
🌐 [www.huchez.com](http://www.huchez.com)  
✉ [contact@huchez.fr](mailto:contact@huchez.fr)



SERVICE CLIENTS  
ATENCIO AL CLIENTE  
KUNDENSERVICE

Pour en savoir plus, n'hésitez pas à nous contacter!  
To know more, please contact us!  
Para más información, póngase en contacto con nosotros!  
Für weitere Informationen können Sie sich gerne an uns wenden!